



Foundation

FOR VANCOUVER PUBLIC SCHOOLS

www.foundationforvps.org

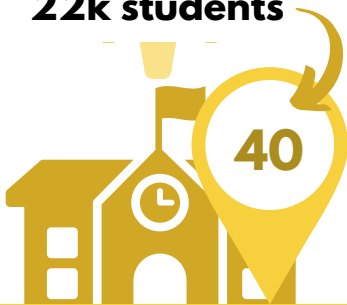


THE STUDENTS WE SERVE

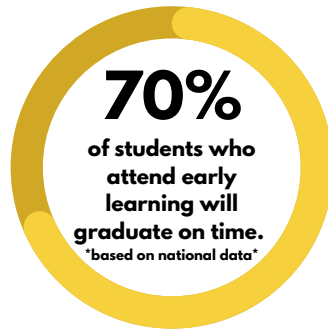


22k students

17.6% are students with disabilities



schools & programs



EARLY LEARNING & SPECIAL EDUCATION

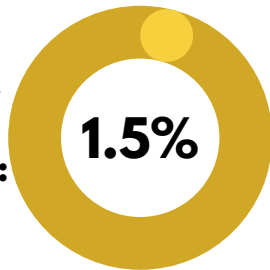
Funds early learning initiatives helping our youngest learners build physical, emotional, & academic readiness to begin kindergarten; as well as support our special education students thrive & reach their full potential.

2023-24 IMPACT AT A GLANCE...

- Over **\$19,000** were invested in special education & early learning programming across the district.
- Teachers reported that students who experienced evening preschool had a smoother transition into kindergarten.
- **144** students participated in evening preschool at **11** schools.
- **30** SPED professionals participated in a workshop to adapt over **100** children's books so that students of all abilities had the opportunity to find joy in reading.

Direct Support to Students in 23-24:
\$1.19 million

Approximate amount directed towards early learning & SPED:
\$19k



Learn More

